

PROJECT:Computer Lap



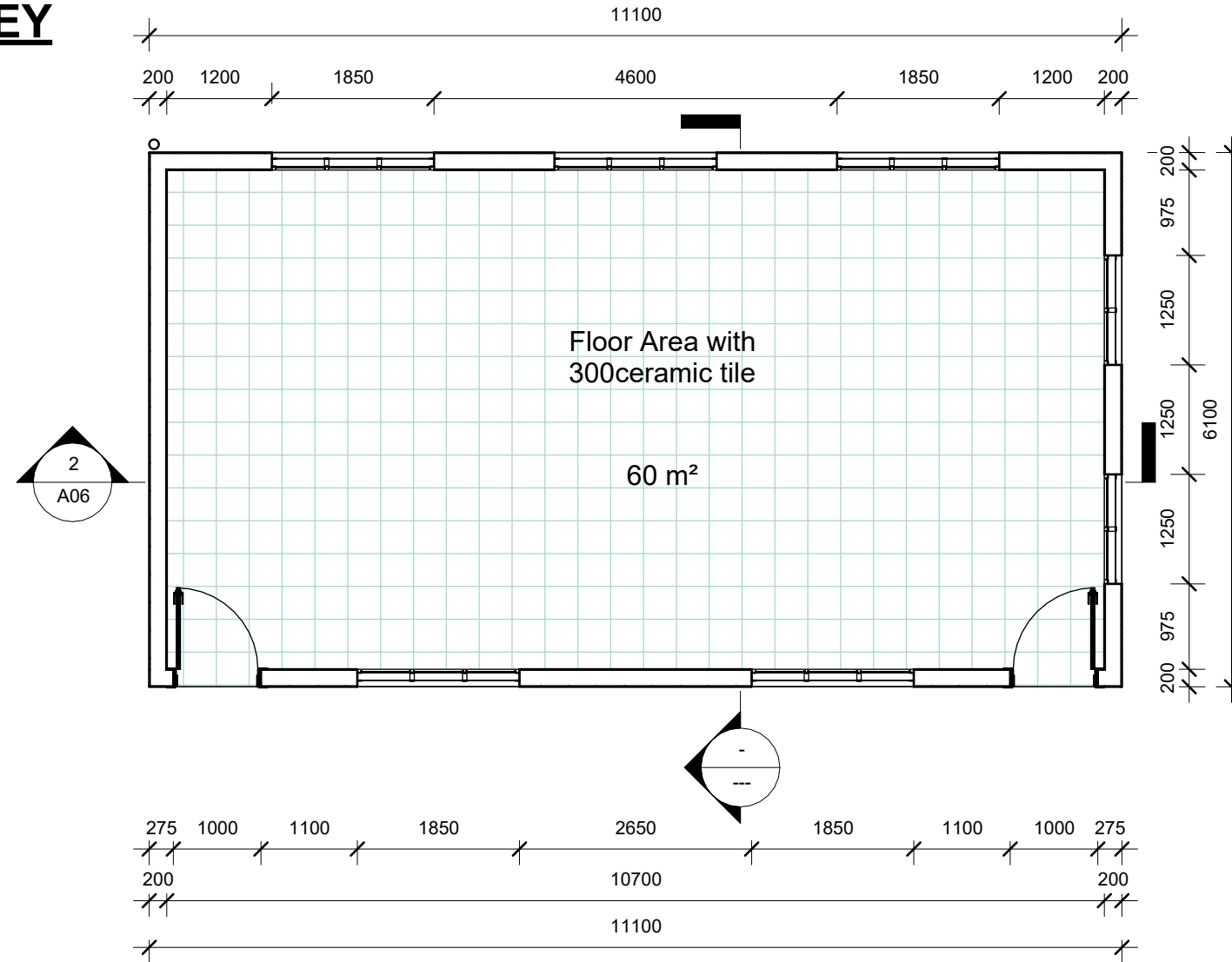
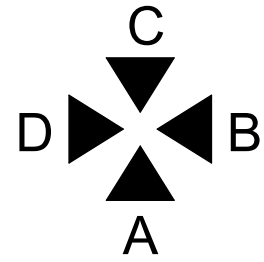
PROJECT TEAM:
TECHNICAL DESIGN SERVICE
MLPID LINNIX KIRITIMATI ISLAND
REPUBLIC OF KIRIBATI

DRAWING INDEX

Sheet List	
Sheet Number	Sheet Name

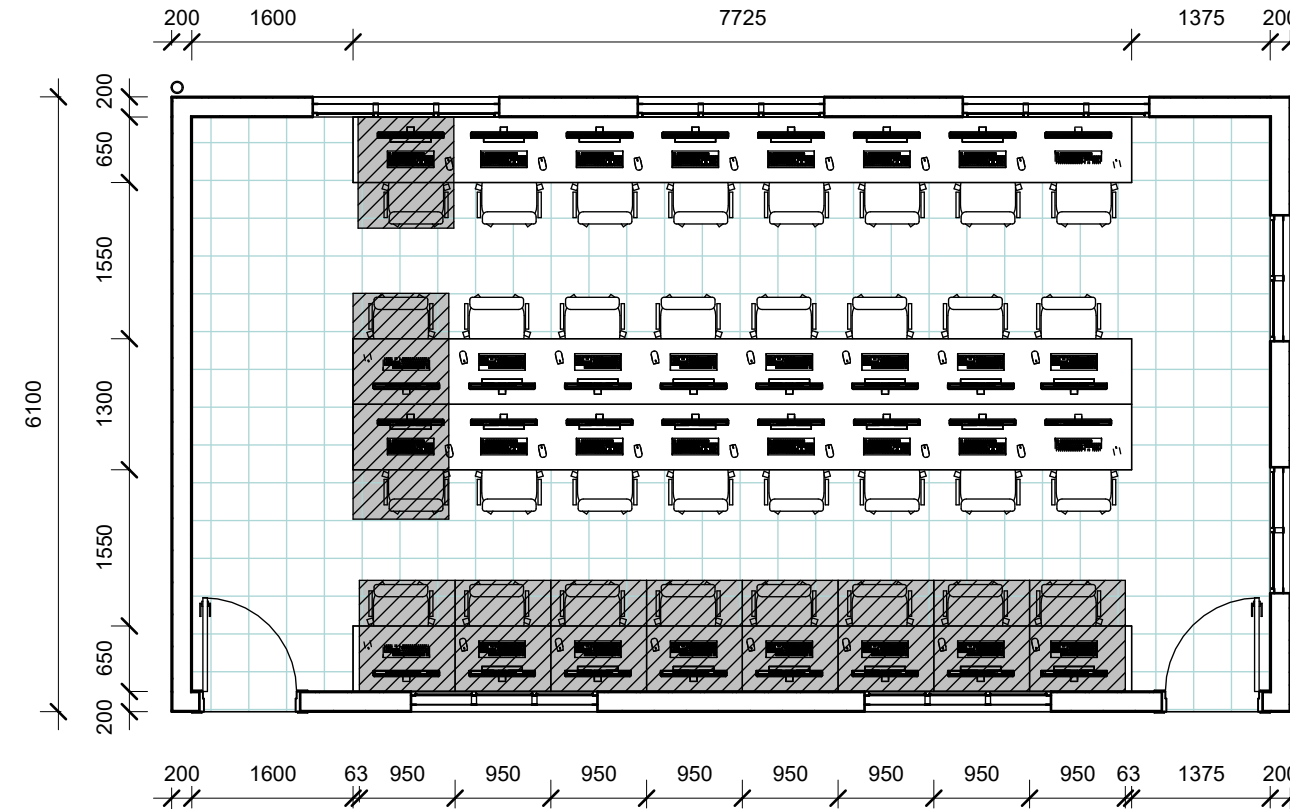
A00	Cover Page
A02	Floor-Layout& Furniture Plan
A03	Foundation-Plan & Footing Details
A04	Elevation
A05	Plumbing & Electrical plan
A06	Section & Roof Details
A07	Truss & Cable End Detail
A08	Roof framing,Roof & Ceiling Plan
A09	Fix Details
A10	Door Details
A11	Window Details
A12	Rain Water Tank Base

ELEVATION KEY



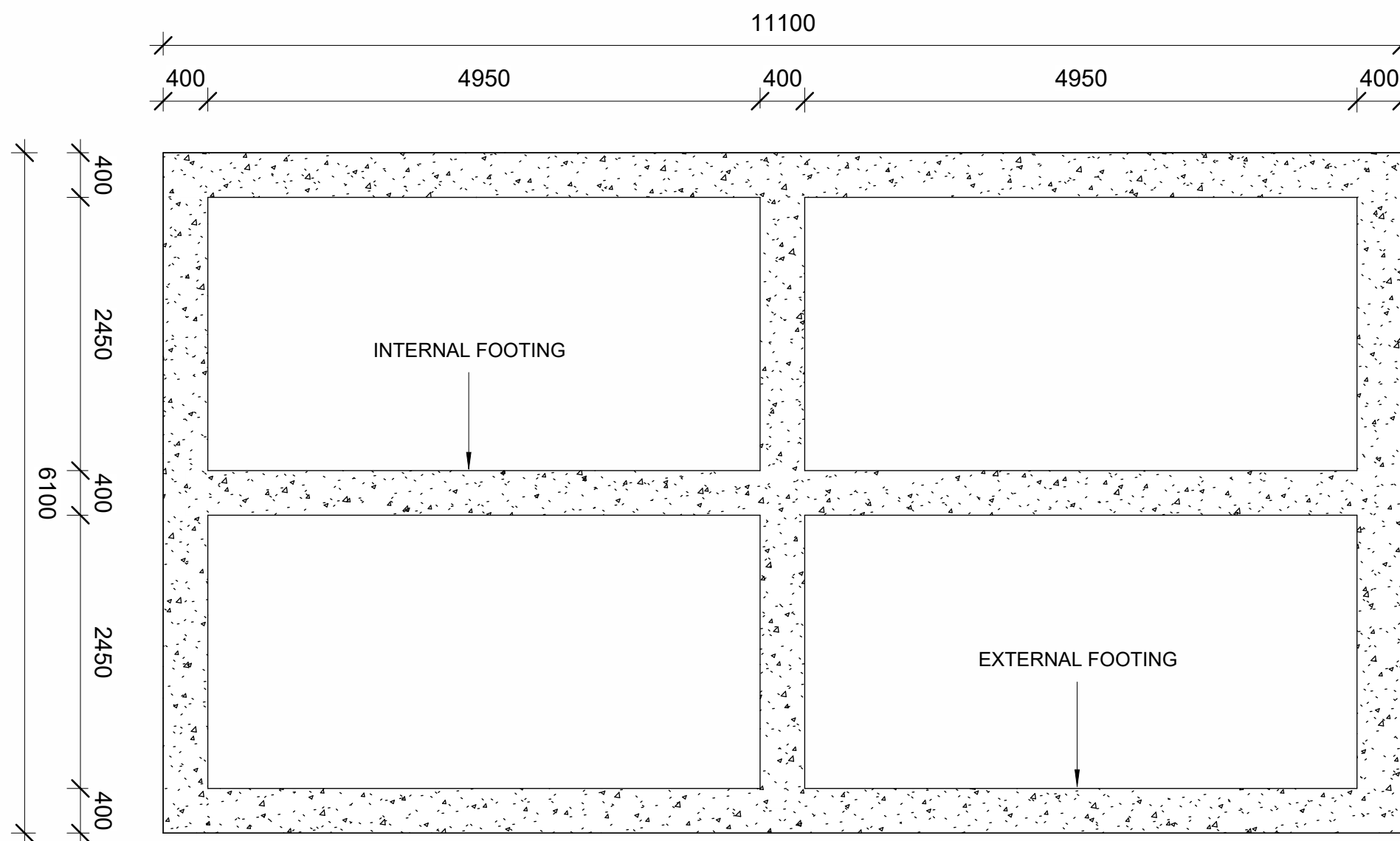
1 Floor Layout Plan

Scal 1 : 75
e:



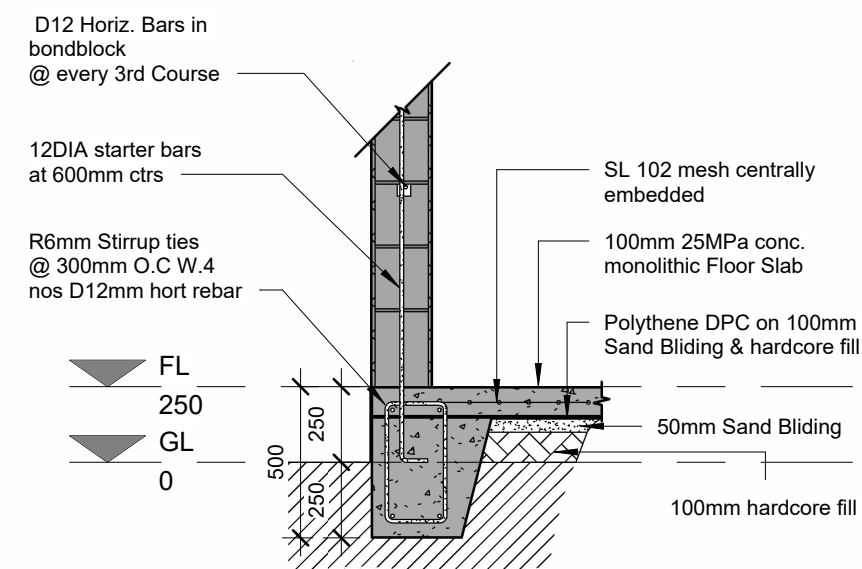
2 Furniture Plan

Scal 1 : 75
e:



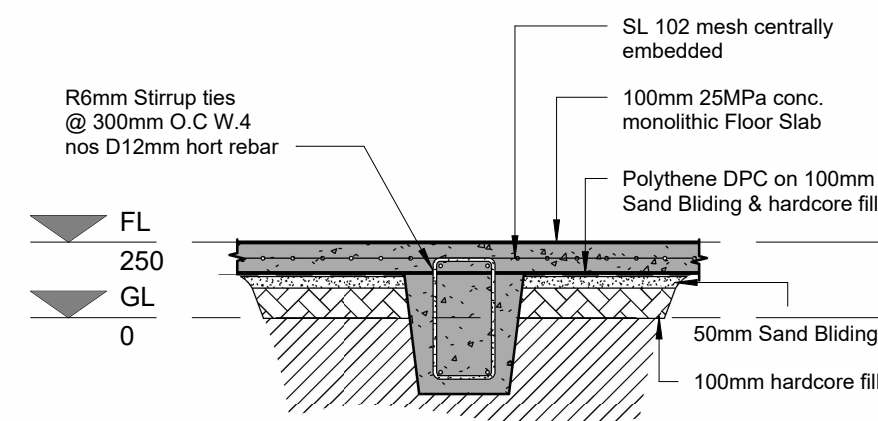
1 Foundation plan

Scal 1 : 50
e:



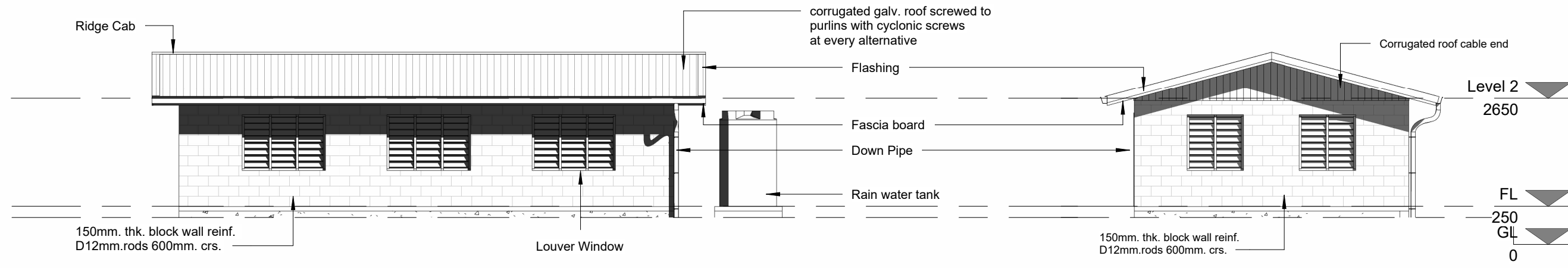
2 External Footing

Scal 1 : 25
e:



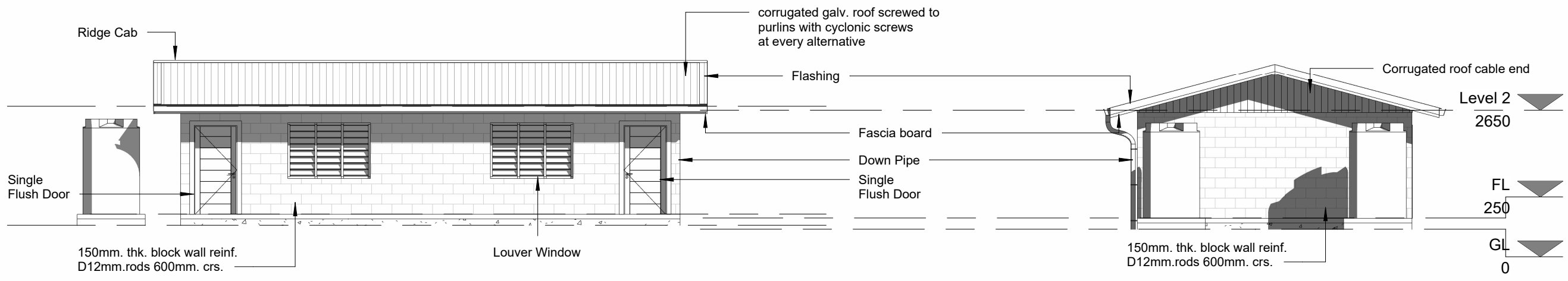
3 Internal Footing

Scal 1 : 25
e:



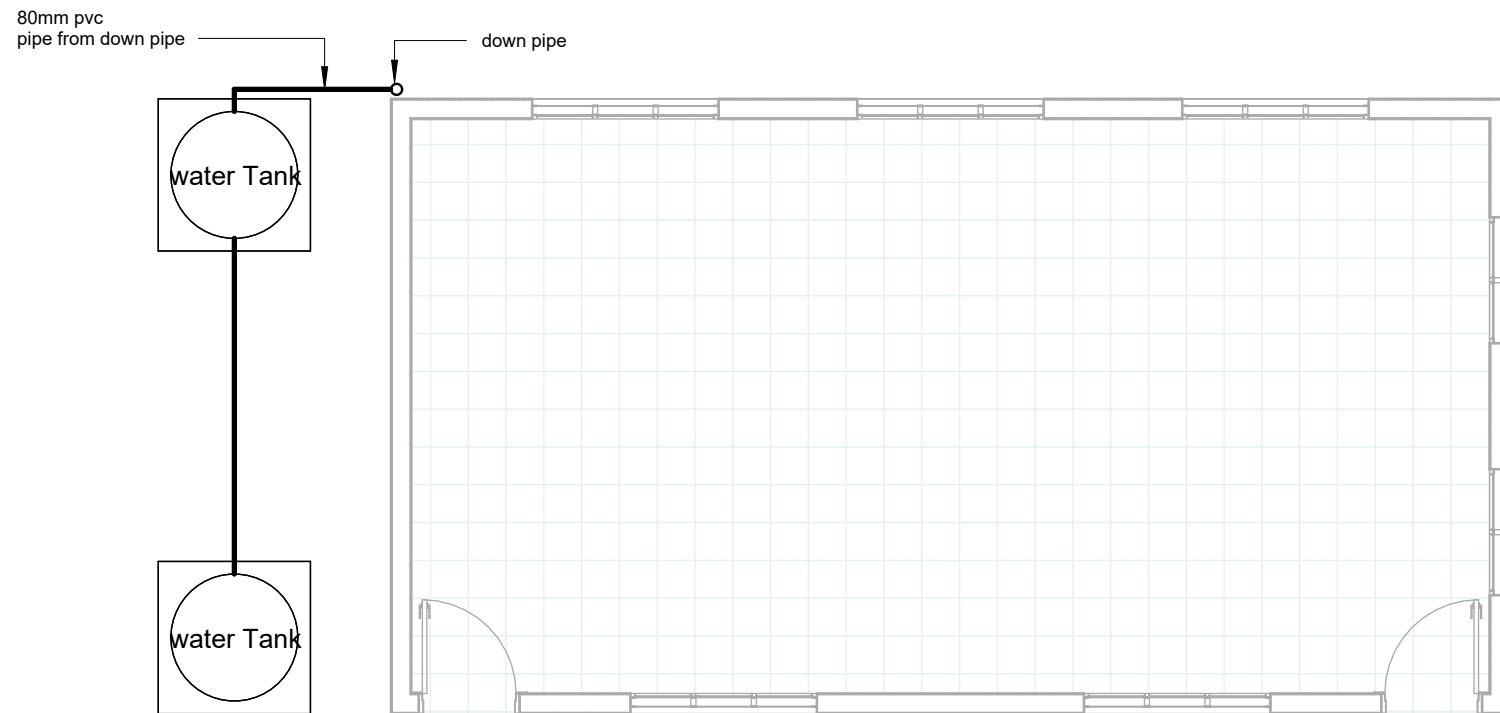
2 Elevation C
Scal 1 : 100
e:

3 Elevation B
Scal 1 : 100
e:



1 Elevation A
Scal 1 : 100
e:

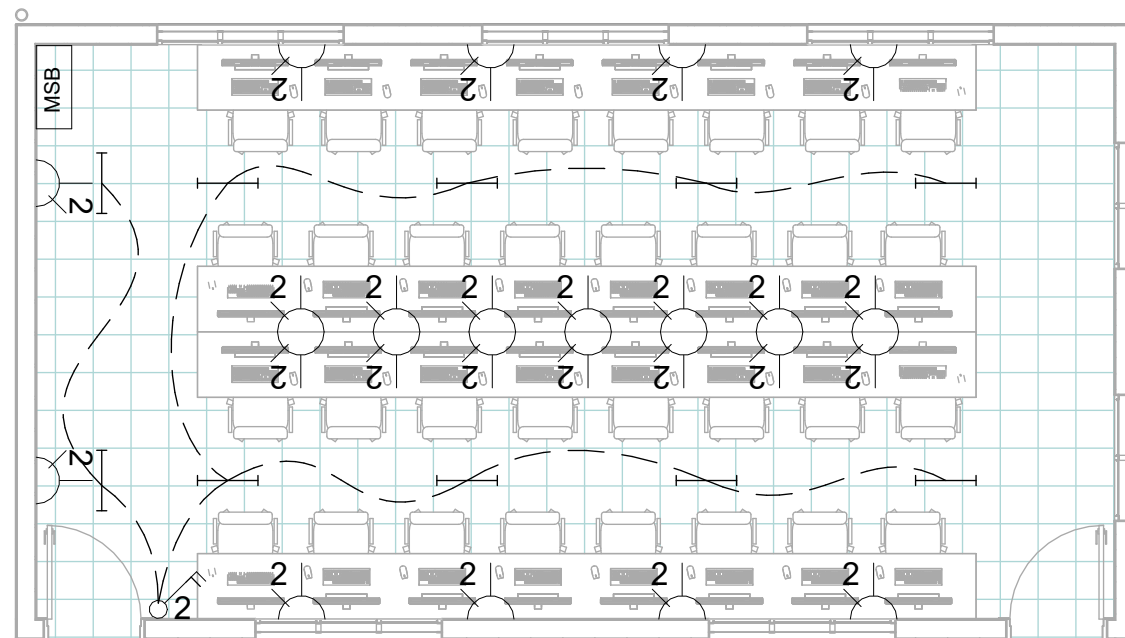
4 Elevation D
Scal 1 : 100
e:



2

Plumbing Plan

Scale: 1 : 75

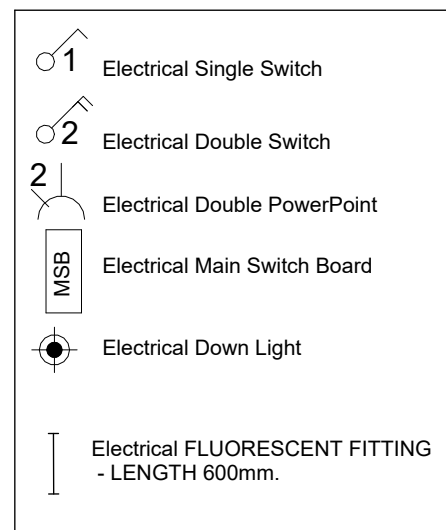


1

Electrical Plan

Scale: 1 : 75

ELECTRICAL LEGEND



CET

TECHNICAL DESIGN SERVICE
MLPID LINNIX KIRITIMATI ISLAND
REPUBLIC OF KIRIBATI

KA JSS

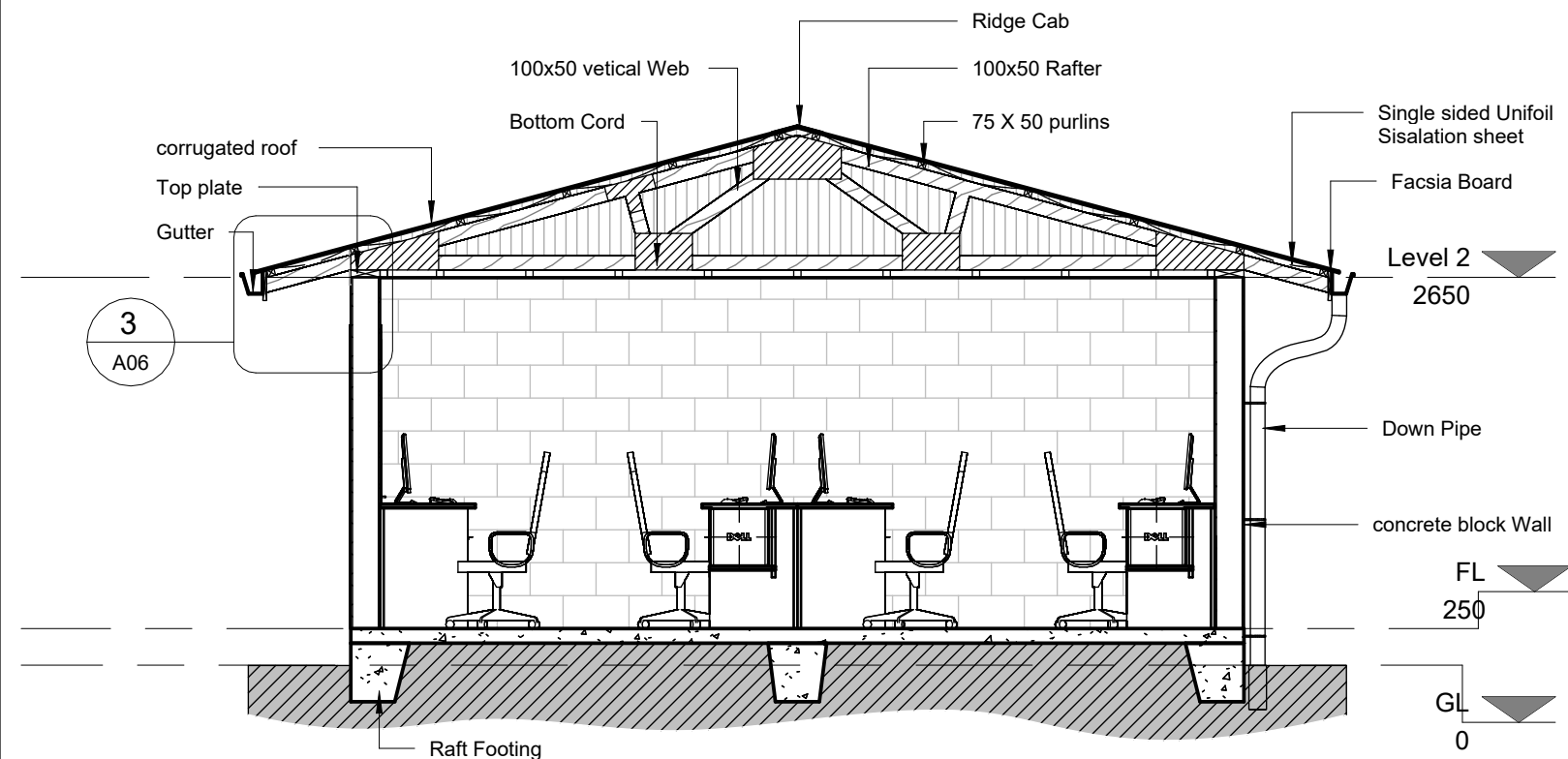
Client: MOE XMAS
PROJECT NO: 1

DWF TITLE:
Plumbing &
Electrical plan

Drawn by: B.B.T
REVIEW BY: TR
DATE: 04/13/23

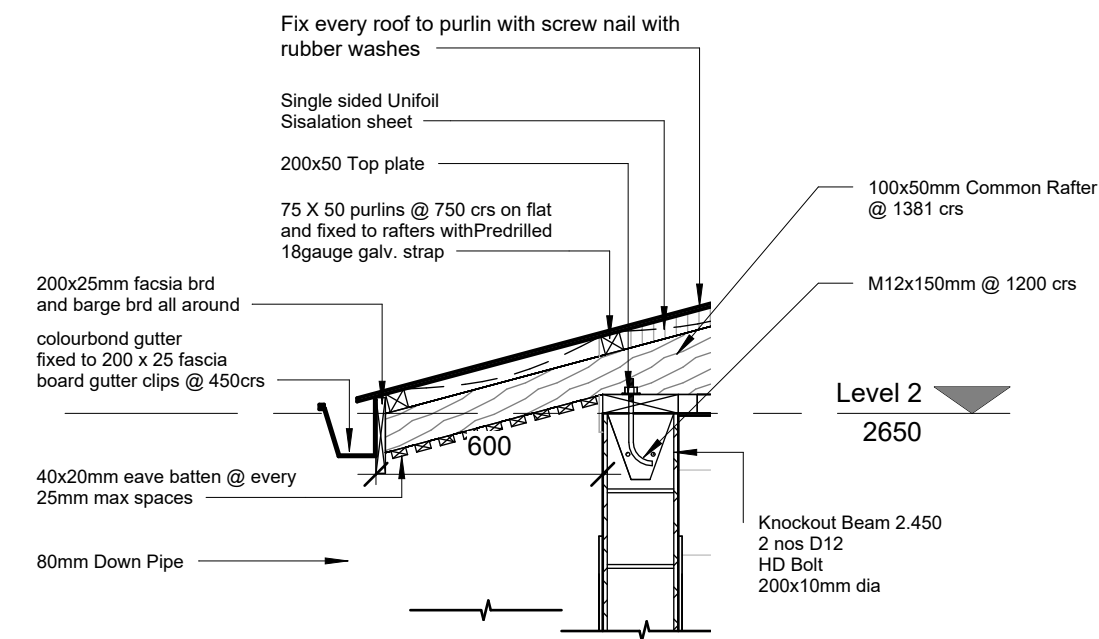
ISSUE: FINAL

PAGE NO: A05



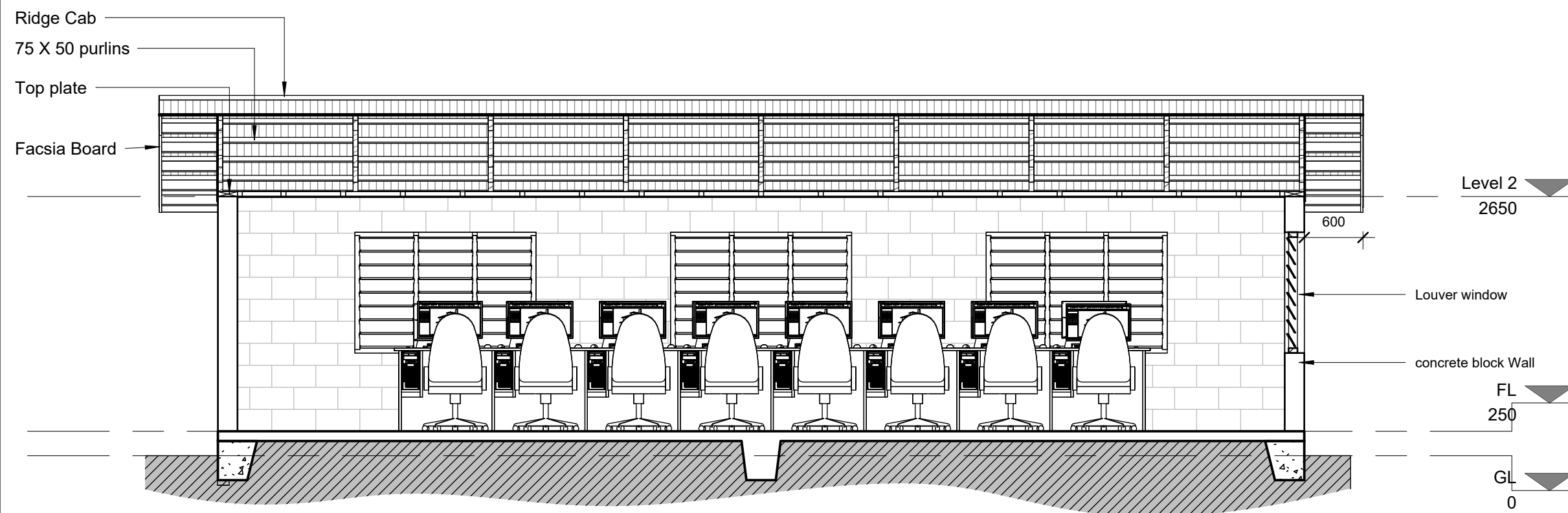
1 Cross section

Scal 1 : 50
e:



3 Roof Detail

Scal 1 : 20
e:



2 LONGITUDINAL SECTION

Scal 1 : 50
e:

CET
TECHNICAL DESIGN SERVICE
MLPID LINNIX KIRITIMATI ISLAND
REPUBLIC OF KIRIBATI

KA JSS

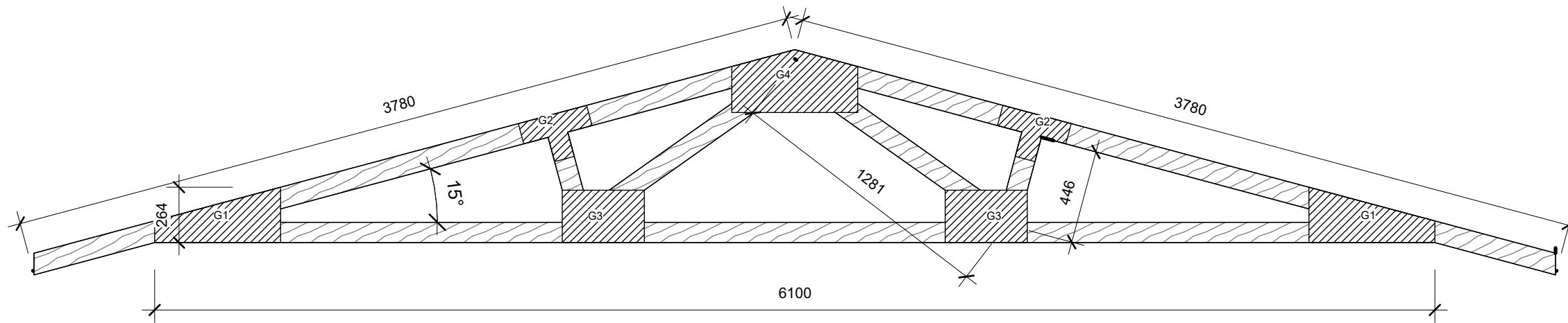
Client: MOE XMAS
PROJECT NO: 1

DWF TITLE:
Section & Roof
Details

Drawn by: B.B.T
REVIEW BY: TR
DATE: 04/13/23

ISSUE: FINAL

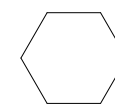
PAGE NO: A06



G-Gasket

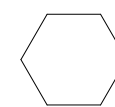
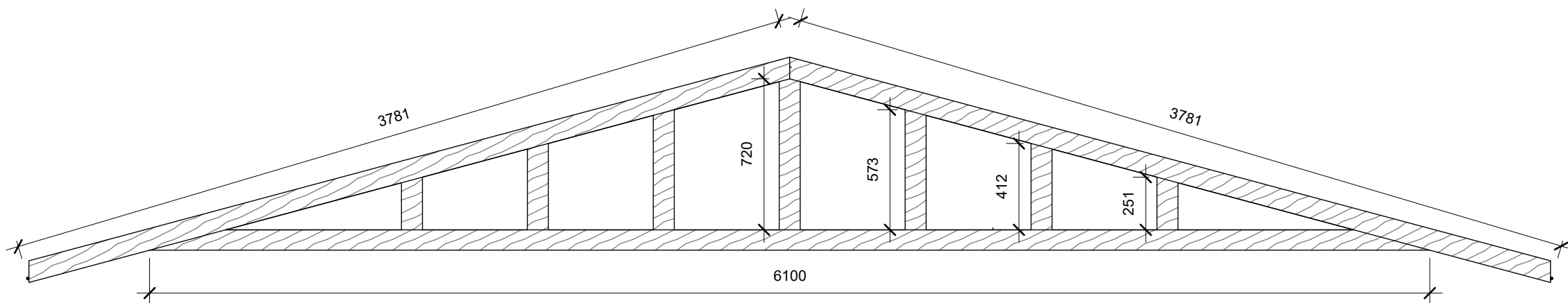
G1-264X600 G2-337X220

G3-391X250 G4-600X300



Truss Detail

Scale 1 : 25
e:



Cable End

Scale 1 : 25
e:

CET
TECHNICAL DESIGN SERVICE
MLPID LINNIX KIRITIMATI ISLAND
REPUBLIC OF KIRIBATI

KA JSS

Client: MOE XMAS
PROJECT NO: 1

DWF TITLE:
Truss & Cable End
Detail

Drawn by: B.B.T
REVIEW BY: TR
DATE: 04/13/23

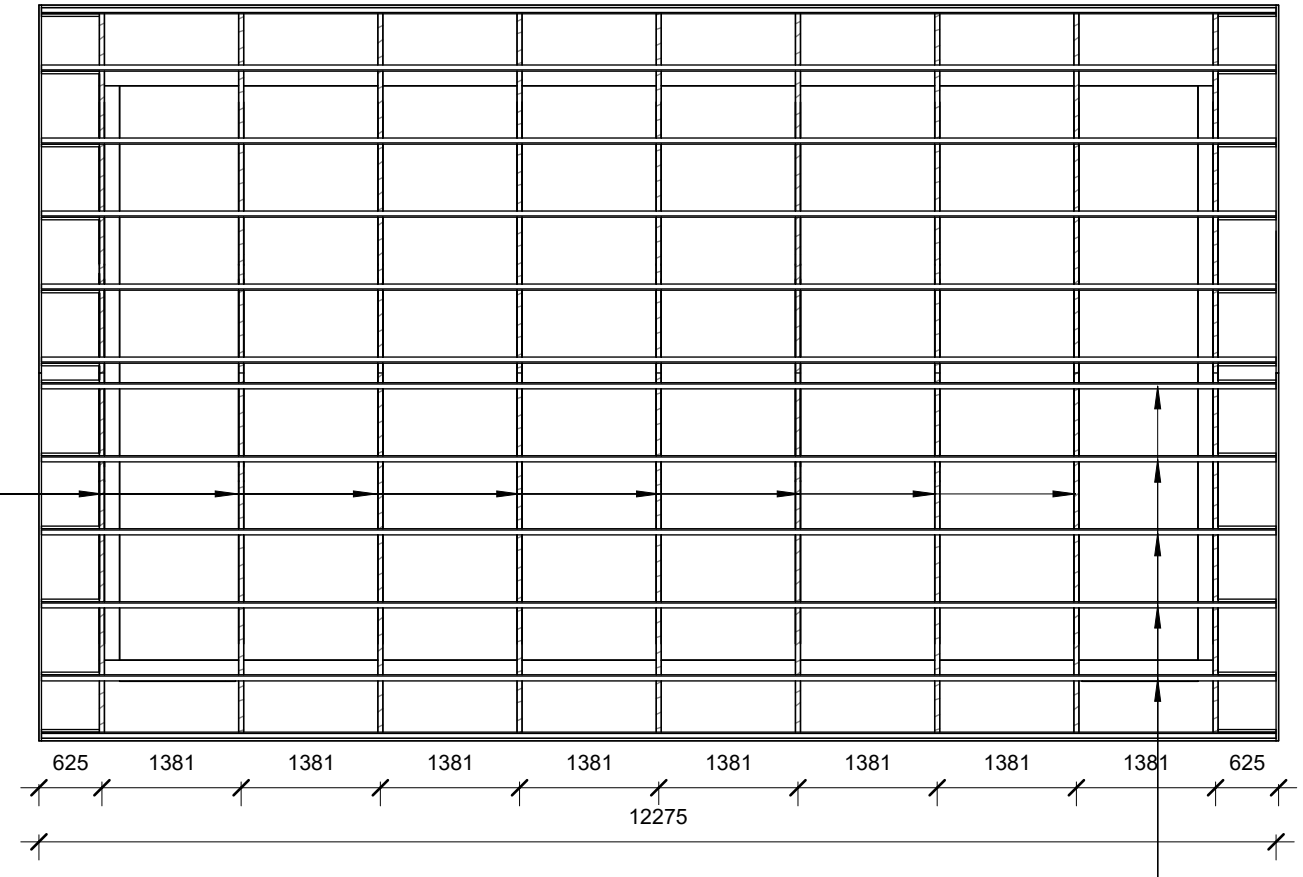
ISSUE: FINAL

PAGE NO: A07

The diagram illustrates a roof gutter system. It features a central horizontal gutter channel labeled "colourbond gutter fixed to 200 x 25 fascia board gutter clips @ 450crs". Above the gutter, the roof surface is divided into two sections by a horizontal line. The upper section is labeled "200 x 25 fascia board" on the left and right sides. The lower section is also labeled "200 x 25 fascia board" on the left and right sides. Three large arrows point downwards from the upper roof section towards the gutter, each labeled "Rain Fall". A single arrow points upwards from the gutter towards the lower roof section, also labeled "Rain Fall". A horizontal line with an arrow points to the right, labeled "Steel Ridge Cap".

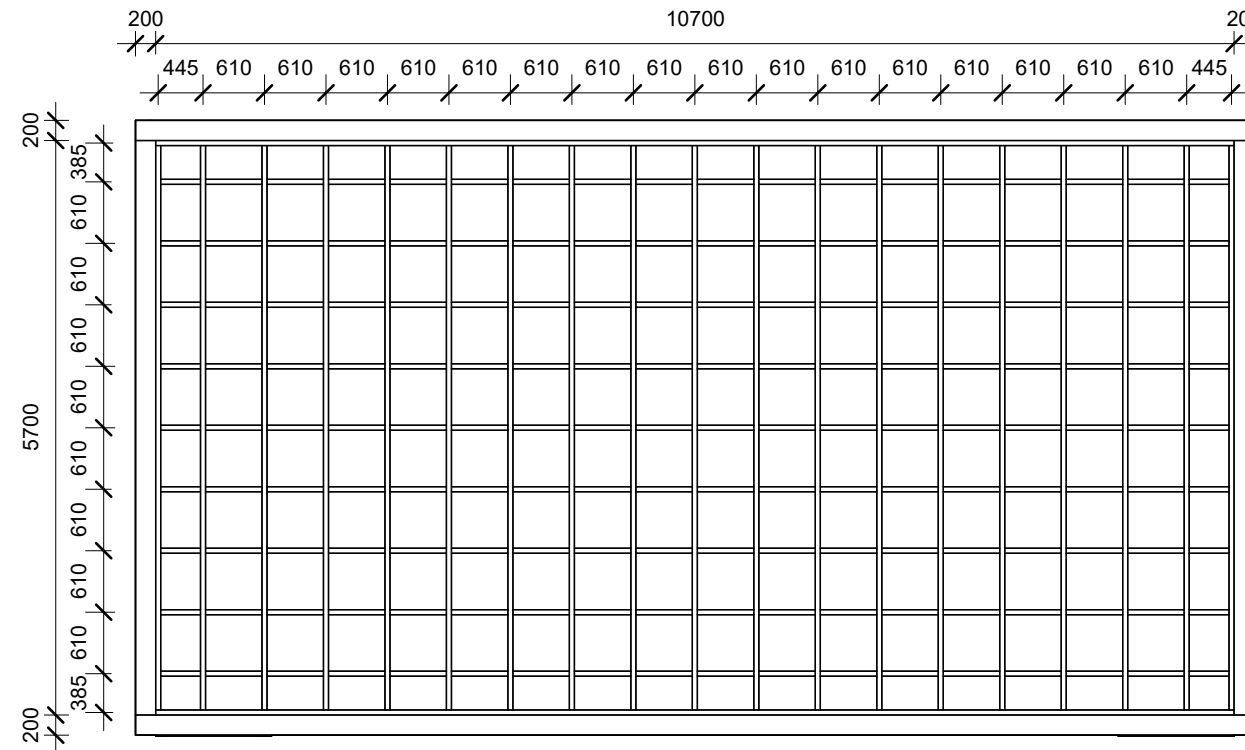
Roof Plan

Fix every roof to purlin with screw nail with rubber washes



Roof Framing

75 X 50 purlins @ 750 crs on flat
and fixed to rafters with Predrilled
18gauge galv. strap



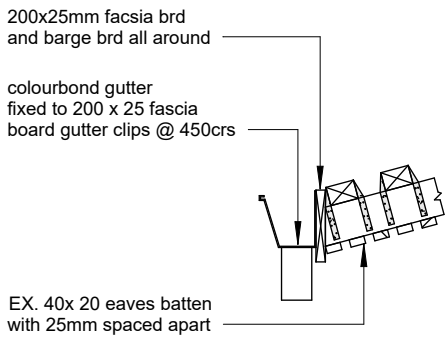
Ceiling Framing Plan

CET

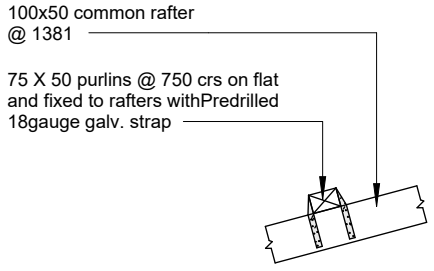
TECHNICAL DESIGN SERVICE
MLPID LINNIX KIRITIMATI ISLAND
REPUBLIC OF KIRIBATI



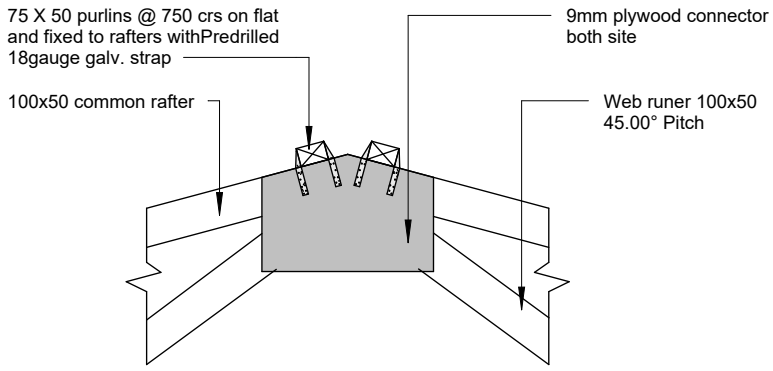
PAGE NO: A08



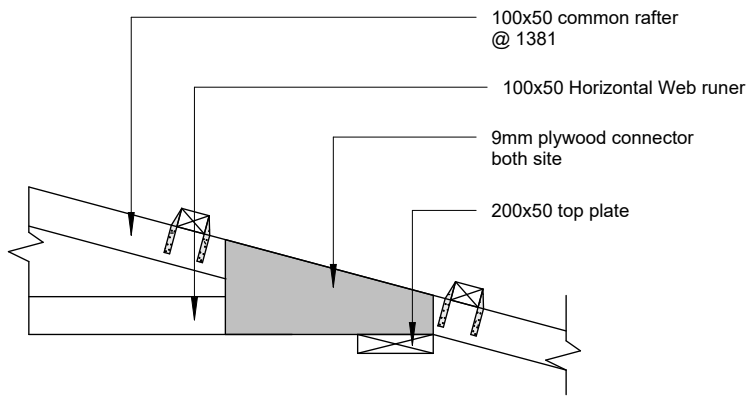
Gutter Connection



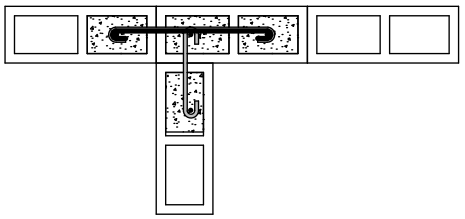
Intersection Block Binding Detail



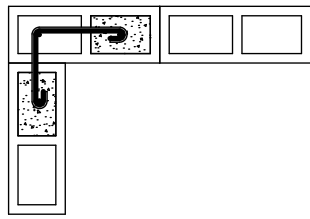
Truss connection 1



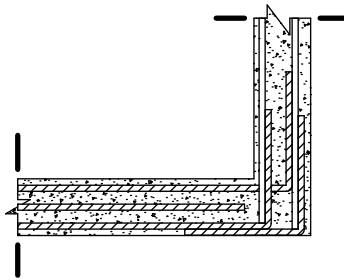
Truss connection 2



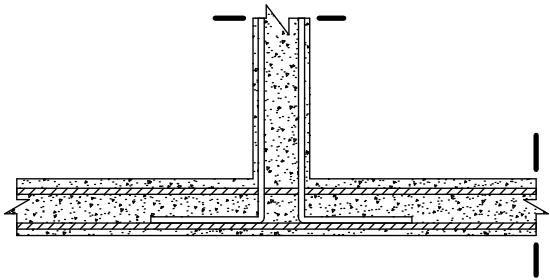
Intersection Block Binding Detail



Internal Block Binding Detail



Intersection Block Binding Detail



Internal Block Binding Detail

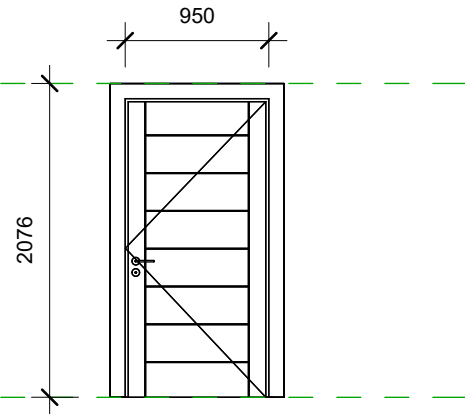
FIX DETAILS

Scal 1 : 20

e:

WDL 2076

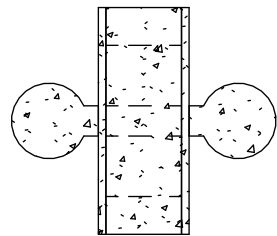
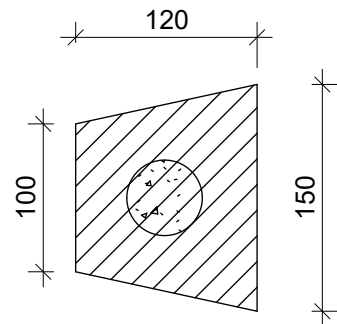
FL



DOOR TYPE	Door 1
DESCRIPTION	45thk SINGLE INTERIOR PANEL DOOR. DOOR FRAME 100x50mm DOOR Jamb 200x50mm 2000mm Height
LOCK	Lockwood 31-55mm Satin STAINLESS STEEL HINGES

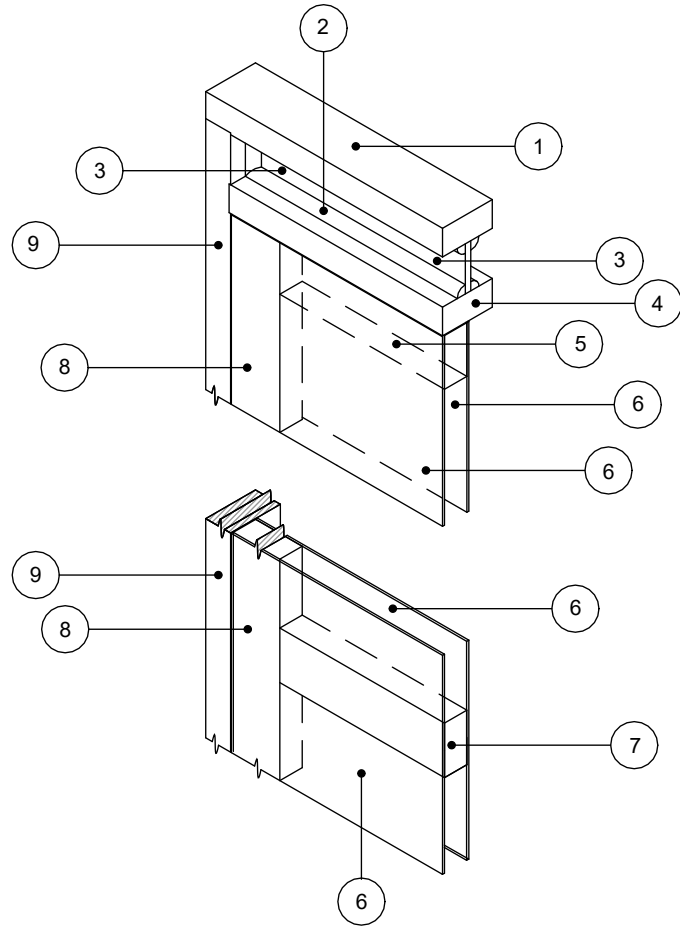
Door schedule

Scal 1 : 50
e:



LOCK RAIL

Scal 1 : 5
e:



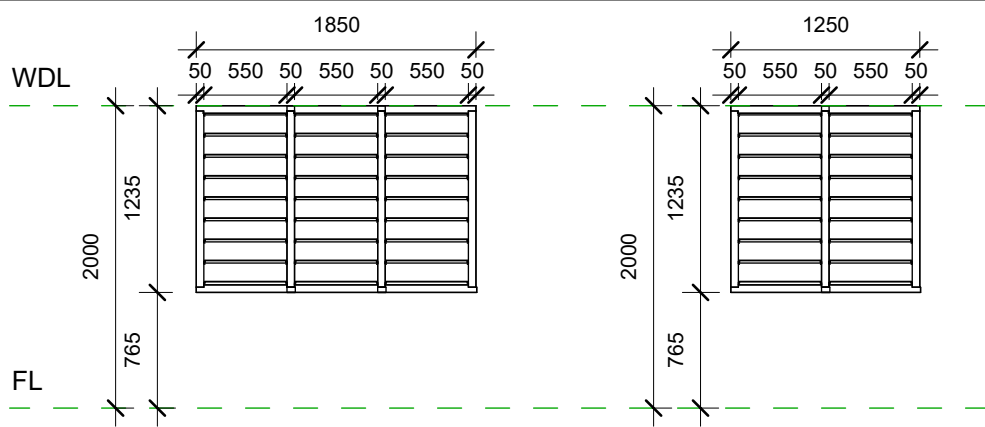
- 1 Door header to specs
- 2 Quadrant beadings along all edges of panel material
- 3 Selected overhead panel material
- 4 Intermediate header to specs
- 5 Door rail to specs
- 6 Selected Panel Siding
- 7 Intermediate rail
- 8 Stile to specs
- 9 Jambs to specs

NOTES:

- Overhead panel siding to be selected and shall be of suitable lattice, plywood or glass glazing - clear or obscured;
- All flush door timber frames be adjoined with suitable nails and wood glues before installing linnings;
- Secondary bracing shall also be fitted unless practically awkward;
- Suitable rebate joints, butt or mortice and tenon joints can be used to adjoin timber frame members;
- Paint or clear varnish shall be applied to the finished surface of door with suitable repetitions of coats to suit;
- Hinges must be at least 100mm from top for upper and 200mm for lower hinge;
- Door locksets be set at least 900mm from FFL and not exceeding 1000mm from FFL for optimal operation. Fitting shall be in accordance with the manufacturers instructions.

ISO Detail - Flush DR

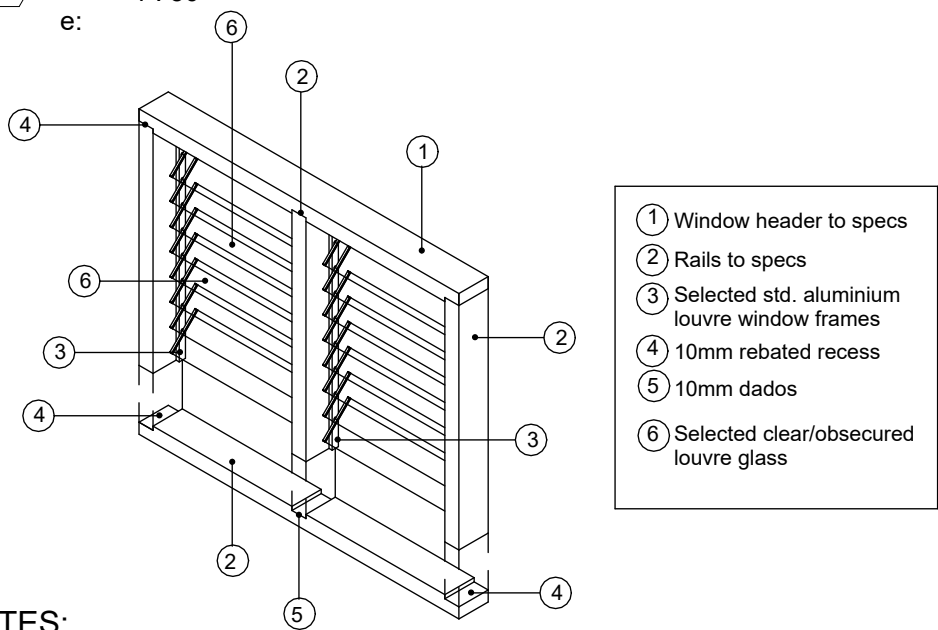
Scal 1 : 50
e:



Windows Type	Window 1
DESCRIPTION	3 BAY WINDOW 8 PLADE Palmar Louvre Frame with Frosted Glass Blade FLYSCREEN TO OUTSIDE OF WINDOWS OPENING TO PREVENT FLIES
Glass	Clear LOUVRE BLADE

Door & Windows Copy 1

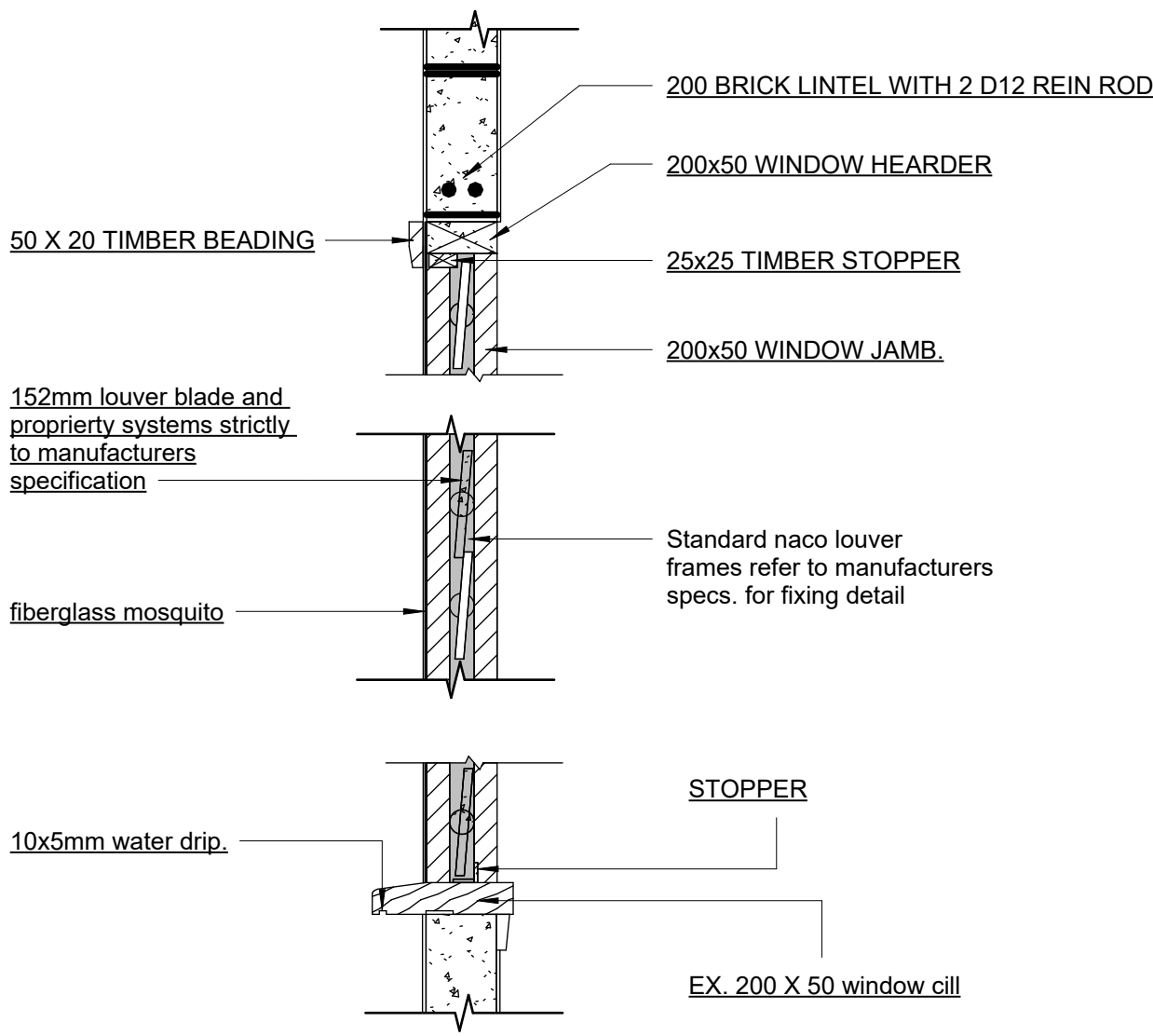
Scale: 1 : 50



- NOTES:
- All window frame members must be of H4 Dressed pine, well sanded prior application of paint coats,
 - Paints must be applied to all timber members with suitable repetitions of coats firstly with primer, undercoat and high gloss enamel. Colours to be selected.
 - 10mm deep dados must be made at every horizontal members to house timber stiles,
 - Louvre frames must be installed flush to the internal edges of window timber stiles.

ISO Detail - Typical WIN

Scale: 1 : 75



Windows Details

Scale: 1 : 10

CET

TECHNICAL DESIGN SERVICE
MLPID LINNIX KIRITIMATI ISLAND
REPUBLIC OF KIRIBATI

KA JSS

Client: MOE XMAS
PROJECT NO: 1

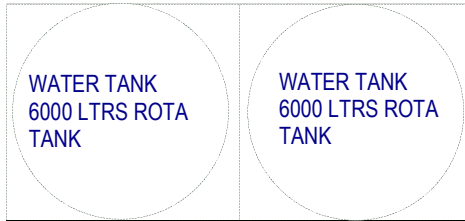
DWF TITLE:
Window Details

Drawn by: B.B.T
REVIEW BY: TR
DATE: 04/13/23

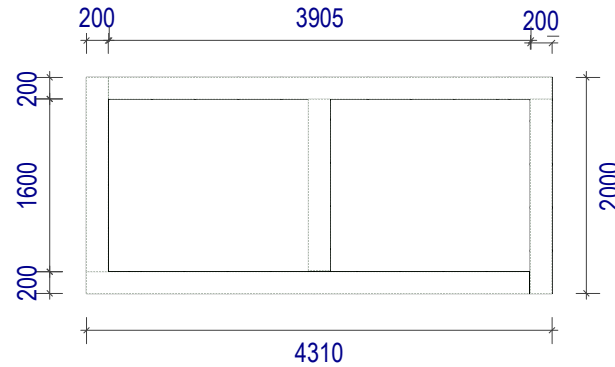
ISSUE: FINAL

PAGE NO: A11

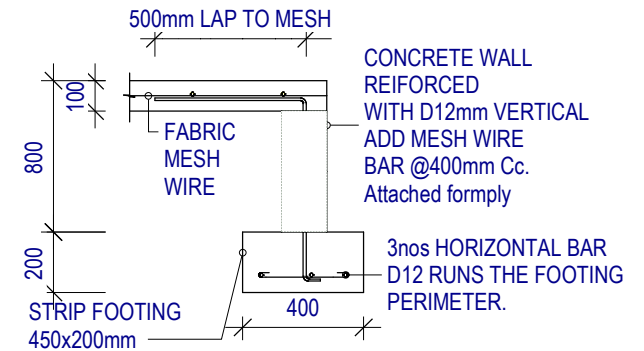
**WATER TANK STAND REINFORCED CONCRETE
SUSPENDED SLAB ON REINFORCED CONCRETE
BLOCK STRUCTURE**



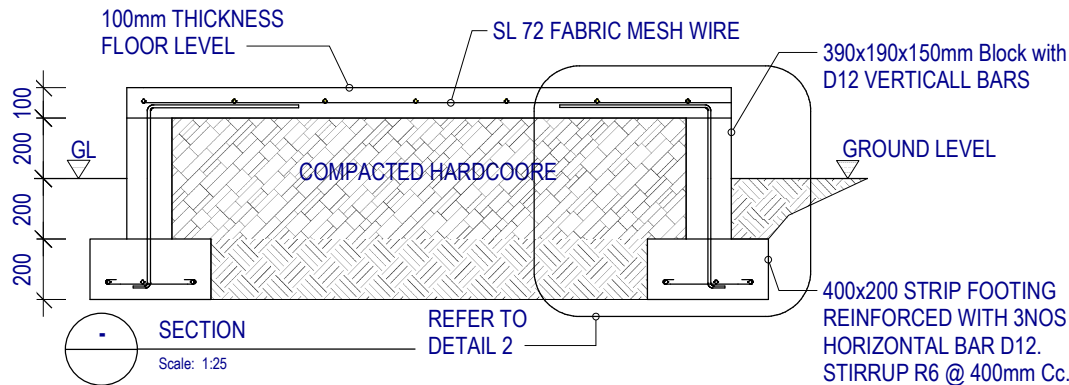
SUSPENSION SLAB PLAN
Scale: 1:25



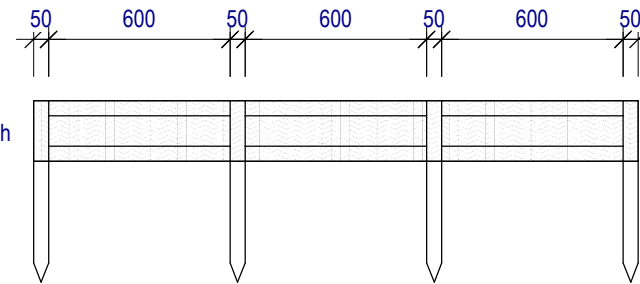
BLOCKWORK LAYOUT
Scale: 1:25



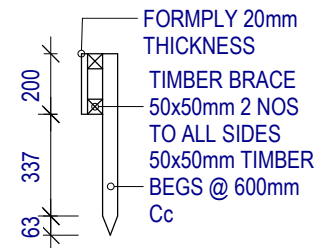
DETAIL 2
Scale: 1:25



SECTION
Scale: 1:25



BEGS DETAILS
Scale: 1:25



CET

TECHNICAL DESIGN SERVICE
MLPID LINNIX KIRITIMATI ISLAND
REPUBLIC OF KIRIBATI

KA JSS XMAS

CLIENT: MOE

PROJECT NO:

DWG TITLE:
RAINWATER BASEMENT

DRAWN BY: B.B.T

REVIEWED BY: TR

DATE: 06/19/2023 FINAL

PAGE NO: A12